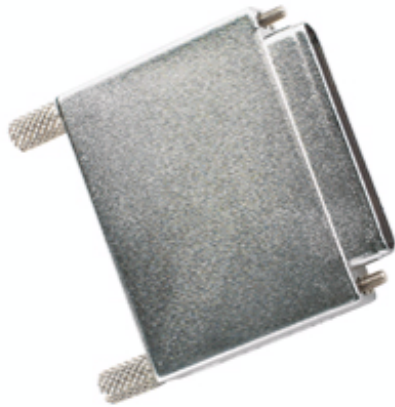




Tripp Lite
1111 West 35th Street
Chicago, IL 60609 USA
Telephone: +(773) 869 1234
E-mail: saleshelp@tripplite.com

Model #: S140-000

SCSI/Fibre Channel - External SCSI U320 LVD/SE Active Terminator HD68M (single-ended)



Highlights

"Active" terminators have voltage regulation circuitry designed to compensate for all voltage fluctuations caused by reflection in the SCSI bus

Description

Tripp Lite's LVD/SE rated (mode-conditioning) external U320 terminator is the perfect solution for any application that requires an HD68M terminator at the end of a SCSI chain. Supports fast/ultra wide SCSI devices up to 320Mbps. This "Mode-conditioning" terminator makes up for any impedance irregularities (multiple formats like U160 and U320 on same SCSI chain). HD68M terminator has thumbscrews for secure connection. Also features an LED. Tripp Lite's active terminators provide the clearest data signal maximizing signal integrity. Supports fast/ultra wide SCSI devices up to 320Mbps. Tripp Lite warrants this product to be free from defects in materials and workmanship for life.

System Requirements

Any external SCSI devices requiring a HD68Male terminator

Package Includes

External SCSI U320 LVD/SE active terminator HD68M single-ended with thumbscrews and LED indicator

Features

Active terminators have voltage regulation circuitry designed to compensate for all voltage fluctuations caused by reflection in the SCSI bus
Backwards compatible with previous SCSI generations
All Tripp Lite SCSI products, regardless of the SCSI generation, meet the latest specifications of ANSI
Tripp Lite offers a complete line of internal and external solutions for SCSI/RAID and fibre channel ranging from the very latest ultra 320 to legacy SCSI-1 and every combination in between
External LVD/SE SCSI terminator with thumbscrews and LED indicator
Tripp Lite warrants this product to be free from defects in materials and workmanship for life

Specifications

General Info	
RoHS	Y
PHYSICAL	
Color	Gray
CONNECTIONS	

Connector A	 HD68 (Male)
Connector B	n/a
Overview	
Style	SCSI

More information, including related products, owner's manuals, and additional technical specifications, can be found online at www.tripplite.com/products/model.cfm?txtModelID=2370.